

**Boulder House,  
Rothiemay,  
Huntly,  
Moray, AB54 7LW**



Gross internal area (approx)

**721.93 sq.m (7771 sq.ft)**

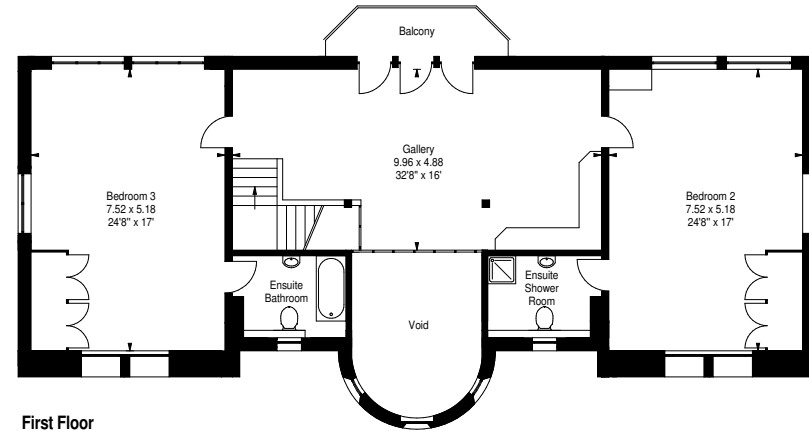
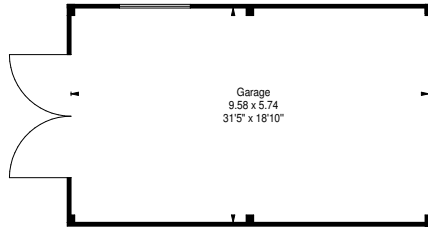
**(Including Basement Garage & Storage)**

**Garage**

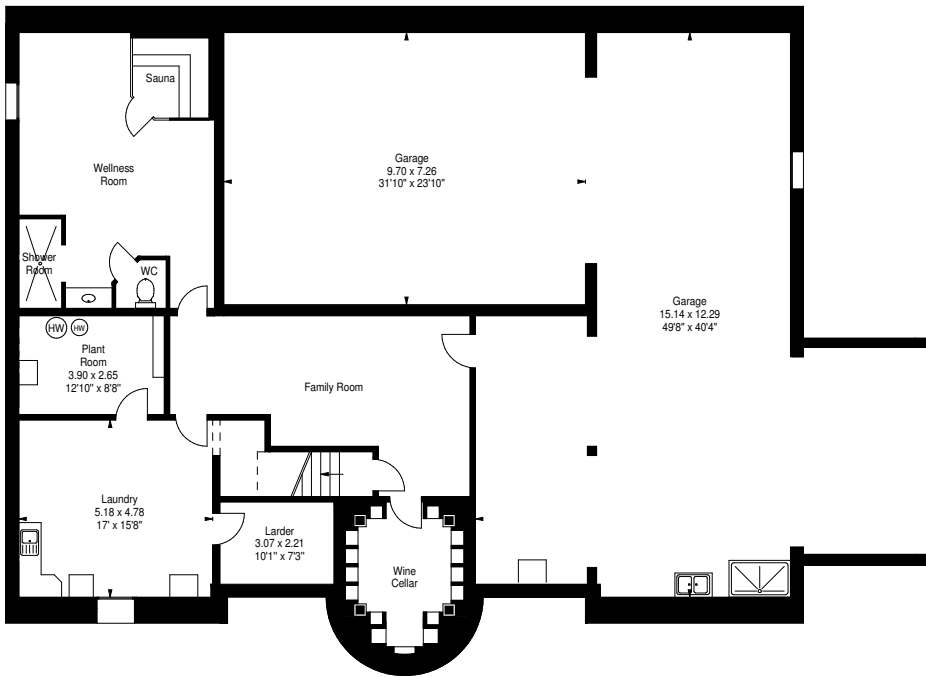
Gross internal area (approx)

**55.18 sq.m (594 sq.ft)**

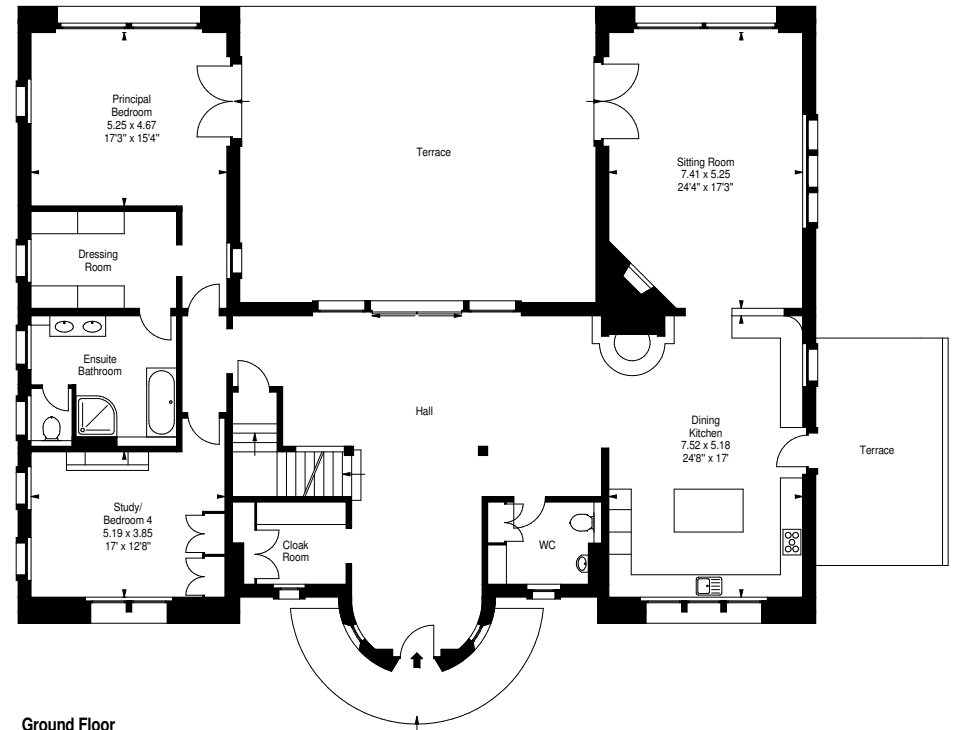
For Identification Only. Not To Scale.  
© SquareFoot 2019.



**First Floor**



**Basement**



**Ground Floor**